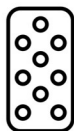




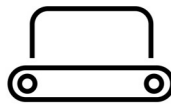
Q-LINE



SOLARIUM



IRRIGATION



TREADMILL



SAFETY WALL

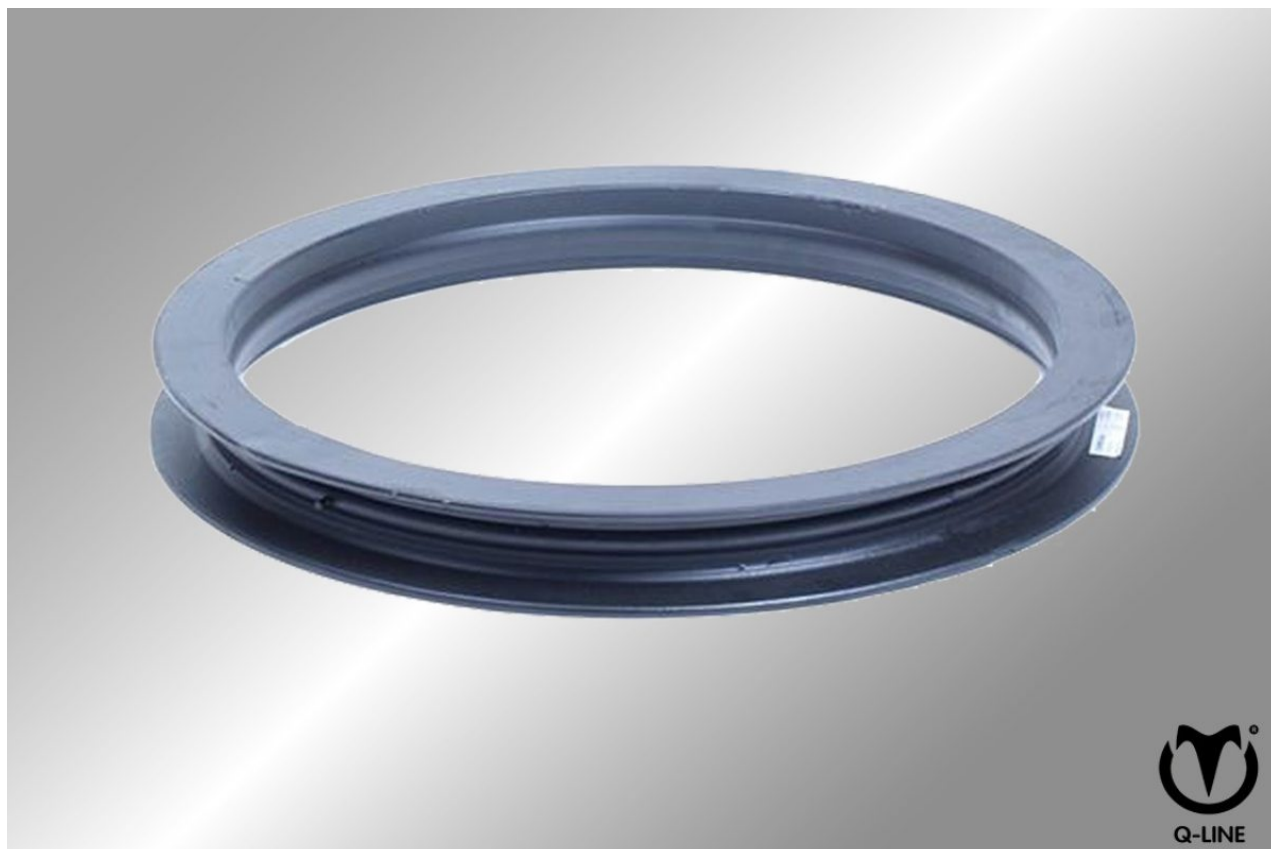


WALKER

Slewing bearing

Pre-drilled U-model

Slewing bearing Pre-drilled 750 U 8/10 / Article no. 23-3-00-00050



Q-LINE

**SOLARIUM****IRRIGATION****TREADMILL****SAFETY WALL****WALKER**

The importance of a high-quality turntable bearing, also known as a slewing ring bearing, in the optimal operation of horse walkers and horse exercisers cannot be overstated. This mechanical component enables the rotational movement of the arms, essential for effective training. The unique design includes a ring-shaped structure with balls between the inner and outer rings, ensuring smooth rotation and minimizing friction.

Our slewing bearing are designed to withstand heavy loads and provide impressive precision and stability. Thanks to strategically placed balls, the slewing ring can rotate effortlessly, even under the heaviest loads. This makes it an indispensable component in applications where precision and reliability are crucial.

It is inevitable that slewing bearing wear out over time and need to be replaced. Here, we offer a selection of the most commonly used bearings for horse walkers and euro cisers, so you can continue to rely on optimal performance and durability. Invest in our high-quality bearings today for smooth rotation and long-term reliability for your walker.

- ✓ Robust
- ✓ Durable
- ✓ Precise



Features

Smooth Rotation:

A high-quality slewing bearing enables a smooth rotational movement, which is essential for effective and comfortable horse training.

Minimal Friction:

The design of the slewing bearing minimizes friction between the inner and outer rings, reducing energy loss and improving the efficiency of rotation.

Robustness and Durability:

High-quality slewing ring bearing are designed to withstand heavy loads, making them durable and reliable even under intense use in horse walkers and horse exercisers.

Precision:

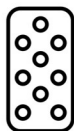
The design of the slewing ring bearing ensures a high level of precision, crucial for maintaining a balanced and controlled rotational movement during training sessions.

Maintenance-Friendly:

Despite their durability, it is important to periodically inspect slewing ring bearing and replace them if necessary. Quality



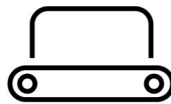
Q-LINE



SOLARIUM



IRRIGATION



TREADMILL

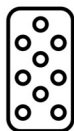


SAFETY WALL



WALKER

bearings simplify maintenance procedures and extend the life of the mill.



SOLARIUM



IRRIGATION



TREADMILL



SAFETY WALL



WALKER

Specifications

Basic material	Steel
Drive system	65 mm
Other	Onderring 8 gaten geboord Bovenring 10 gaten geboord
Suited for	Q-Line walkers basic / LBE / Sublime

Contact details

Q-Line Equestrian B.V.

Haarbrinksweg 47

7678 RS Geesteren

Tel. +31(0)546212361

info@Q-Line.com

www.q-line.com