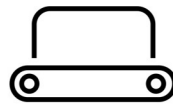




SOLARIUM



IRRIGATION



TREADMILL



SAFETY WALL



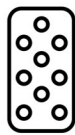
WALKER

## MeRCuRR Solarium

basic, 230V

MeRCuRR solarium 230 / Article no. 20-5-05-00230

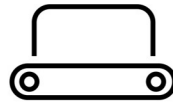




SOLARIUM



IRRIGATION



TREADMILL



SAFETY WALL



WALKER

The Mercurr is made of impact-resistant, heat-resistant plastic and is ideal for situations where space is limited. Its compact shape, in combination with a wash and grooming area, makes it the perfect grooming spot for your horse. This model features a round cutout at the horse's neck. The combination of 22 IR lamps and 4 fans provides a pleasant heat blanket over your horse.

#### Improved Blood Circulation

The infrared rays emitted by the Q-Line horse solarium enhance muscle blood circulation, improving the muscles' waste removal process and reducing the risk of injuries for your horse. The generated infrared heat from the Q-Line horse solarium facilitates quicker absorption of blood sugars by the muscles and faster removal of lactic acid from the muscles.

#### Warm-up

Using a Q-Line horse solarium for a warm-up before training or competition relaxes the muscles and reduces the risk of injuries. The horse solarium is ideal for drying your horse after a wash. The generated heat from the Q-Line horse solarium promotes muscle elasticity and provides soothing relief for injuries.

#### Therapeutic

Q-Line horse solariums are also available with the latest innovations in light therapy. Exposing the horse to specific light frequencies creates a therapeutic effect, helping your horse regain balance. Combined with the generated heat, your horse will recover faster after intense physical exertion.

#### Energy Efficient

A Q-Line horse solarium consumes significantly less energy than other solariums to achieve the same results. The solarium parts made of specially formulated plastic minimize heat loss, and the airflow from the fan is heated by the residual warmth inside the horse solarium. The infrared lamps in the Q-Line solariums are designed to reach higher temperatures compared to other lamps.

- ✓ Healthy for horse
- ✓ Good blood flow
- ✓ Fewer injuries
- ✓ Rapid lactic acid removal
- ✓ Relaxes the horse
- ✓ Fast drying
- ✓ Higher muscle elasticity

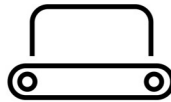




SOLARIUM



IRRIGATION



TREADMILL



SAFETY WALL



WALKER

## Features

Discover the exceptional features of Q-line® solariums designed to ensure optimal safety, efficiency, and style for your equine companion.

### 1. Enhanced Safety Design:

Q-line® solariums are crafted with rounded edges and corners, eliminating the risk of injuries to your horse. Unlike many competitors' models made of sharp-edged steel, our solariums prioritize your horse's safety, reducing the potential for accidents and injuries.

### 2. Strategic Lamp Placement:

Our solariums feature lamps positioned higher than the surfaces, preventing them from falling out of their fittings. This innovative design minimizes the risk of contact with the warm IR lamps, ensuring your horse's safety during sessions.

### 3. Lightweight and Injury-Resistant:

Q-line® solariums are lightweight, significantly reducing the chances of injuries caused by accidental contact. Their user-friendly design ensures both safety and ease of use.

### 4. Energy Efficiency and Environmental Friendliness:

Our solariums consume up to 40% less energy than competitors, making them environmentally friendly choices. Crafted from heat-resistant plastic, they are corrosion-resistant, leading to minimal heat loss and high energy efficiency.

### 5. Durable Infrared Lamps:

Q-line® solariums are equipped with specially designed infrared lamps capable of enduring prolonged intense heat, burning for up to 5000 hours. This ensures longevity and consistent performance.

### 6. Stylish and Easy Installation:

With a sleek appearance and meticulous finishing, our solariums add a touch of elegance to your stable. All models come plug-and-play ready, allowing effortless installation for your convenience.

### 7. Intelligent Ventilation System:

Automatic fans activate when the internal temperature reaches 30°C, preventing cold air from blowing directly onto your horse. Located at the bottom, the fan prevents dust from entering the solarium. Cold air is drawn across the lamps before being gently distributed over your horse.

### 8. Low Maintenance and Water Resistance:

Thanks to advanced technology and durable materials, Q-line® solariums require minimal maintenance. Their waterproof design from the top makes them ideal for use in wash or grooming areas.

### 9. Certified Safety Standards:

Compliance with machine directive 2006/42EG and the CE mark is standard across all Q-line® solariums. Additionally, our solariums are factory-inspected according to NEN 3140 and ARBO guidelines, meeting stringent European safety standards.

Elevate your horse care routine with Q-line® solariums – where safety, efficiency, and style converge seamlessly. Experience the difference today.

### Installation of the Q-Line Solarium

Q-Line solariums are designed for **maximum quality with minimal effort**. All models are **plug-and-play and pre-assembled**, making them very easy to install by yourself.



SOLARIUM



IRRIGATION



TREADMILL



SAFETY WALL



WALKER

Each set comes with a **clear user and installation manual**, guiding you step by step through the process. All cables, plugs, and mounting points are prepared – **just connect, hang up, and it's ready to use.**

Prefer professional installation? No problem. Our experienced **Q-Line installation team** operates **worldwide**, ensuring perfect setup, safety, and top-quality finishing.



SOLARIUM



IRRIGATION



TREADMILL



SAFETY WALL



WALKER

## Configuration & options



Control basic 230



Control CB IR AB 230



Control MT IR AB 230



Control ET-IR AB 230



Pay with app 230



Coin device 230 € 1



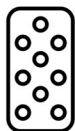
Angled support zinc



Electric Lift 100



Solarium Installation



SOLARIUM



IRRIGATION



TREADMILL



SAFETY WALL



WALKER



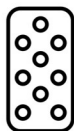
**“Already after the first treatment with the Warm-up I could finally, after 3 years of trying everything, normally mount my horse standing complete still and without stress. I’m amazed at the difference the mounty pad has made to Jack in less than a week.”**

— Vicky Jeffries



**“Every horse is different, so every horse has his own pad for the best performances. That’s only possible with Sedelogic. I train Wotan for example with the Orthopad so the saddle gets slightly lifted in the back. For him, it’s the perfect solution to give his best in every competition.”**

— Remco Bouwens



SOLARIUM



IRRIGATION



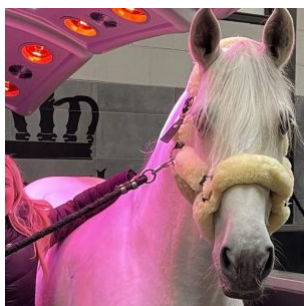
TREADMILL



SAFETY WALL

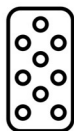
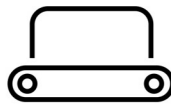


WALKER



**“I’ve been using the Q-line solarium for several years now, and I’m genuinely super happy with it! I have the MaXuSS model — the version that allows you to set the lights in a specific colour, so naturally mine is pink! In addition to the heat lamps, there are also UV lamps, which really benefit my horses, especially during the winter months. The service has always been perfect — it’s already been relocated twice. The technicians are incredibly friendly and the end result is great — it’s installed super neatly. In short: top-notch service and a top-quality solarium!”**

— Britt Dekker

**SOLARIUM****IRRIGATION****TREADMILL****SAFETY WALL****WALKER**

## Specifications

<b>Length</b>	190 cm
<b>Width</b>	119 cm
<b>Thickness</b>	40 cm
<b>Drive system</b>	45Kg
<b>Basic material</b>	Reinforced heat resisting plastic
<b>Colour</b>	Black / Silver Grey
<b>Number of IR lamps</b>	22 x 150 Watt
<b>Power supply</b>	L+N+PE 230 Volt
<b>Power usage</b>	3420 Watt
<b>Fuse with</b>	C16 A
<b>IP rating</b>	IP 54
<b>Air blower</b>	4x 90m3, automatic at 30grC
<b>Suspension</b>	4x chains (1 meter) and swing hooks
<b>Supplied as standard</b>	Power cable 10 mtr including plugs
<b>Quality mark</b>	CE / NEN 3140 / OSH
<b>Transport weight</b>	65 kg
<b>Transport size</b>	1 pallet 120x80x220 cm

## Contact details

**Q-Line Equestrian B.V.**

Haarbrinksweg 47

7678 RS Geesteren

Tel. +31(0)546212361

[info@Q-Line.com](mailto:info@Q-Line.com)

[www.q-line.com](http://www.q-line.com)