



Q-LINE



SOLARIUM



IRRIGATION



TREADMILL



SAFETY WALL



WALKER

MeRCuRR Solarium

with UV lights, 230V

MeRCuRR solarium UV 230 / Article no. 20-5-05-20230




SOLARIUM

IRRIGATION

TREADMILL

SAFETY WALL

WALKER

The MeRCuRR is built to the highest specification with a heat resistant, colored reinforced plastic body. Because of its compact shape the solarium is in combination with a washing place the ideal place to take of your horse. The front is raised to allow free movement of the horses neck and features rounded edges to avoid injury. A combination of 20 IR lamps , 2 UV lamps and 4 circulation fans ensure an even and pleasant temperature over your horse.

The 2 UV lamps are an excellent substitute for the sun. The radiators have a regulative effect on the vegetative nervous system and an increase in the elasticity and responsiveness of the Redox system. For the organism this means preservation and under certain circumstances even an increase in performance.

Our daily routine does not leave us much time to make proper use of the benefits of sunlight and it's vital, health preserving radiation.

Ever increasing industrialization has forced us to restrain our activities to enclosed rooms where sunlight can only enter through filters or not at all. This affects not only humans but also horses, especially since the blanket of smog which is spreading in an alarming way over our cities and industrial areas, absorbs the most important rays of sunlight.

The lack of sunlight leads among others things to medical disorders which are generally known as "Vegetative Dystonie". It's symptoms are increased sensitivity, less endurance, decreased efficiency and higher susceptibility to infectious diseases.

With horses vitamin D synthesis occurs in the skin through exposure to UVB radiation from sunlight. This process involves the conversion of a vitamin D precursor, 7-dehydrocholesterol, into active vitamin D. After sunlight exposure, vitamin D3 is produced and converted into the biologically active form, calcitriol, in the liver and kidneys. Factors such as sunlight intensity, coat type, and location influence production. In areas with limited sunlight, vitamin D supplementation may be necessary. The use of UV lamps, although complex due to various wavelengths, can be an alternative approach; however, consulting with a veterinarian is essential for safe use.

Improved Blood Circulation

The infrared rays emitted by the Q-Line horse solarium enhance muscle blood circulation, improving the muscles' waste removal process and reducing the risk of injuries for your horse. The generated infrared heat from the Q-Line horse solarium facilitates quicker absorption of blood sugars by the muscles and faster removal of lactic acid from the muscles.

Warm-up

Using a Q-Line horse solarium for a warm-up before training or competition relaxes the muscles and reduces the risk of injuries. The horse solarium is ideal for drying your horse after a wash. The generated heat from the Q-Line horse solarium promotes muscle elasticity and provides soothing relief for injuries.

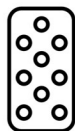
Therapeutic

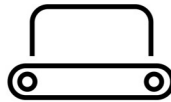
Q-Line horse solariums are also available with the latest innovations in light therapy. Exposing the horse to specific light frequencies creates a therapeutic effect, helping your horse regain balance. Combined with the generated heat, your horse will recover faster after intense physical exertion.

Energy Efficient

A Q-Line horse solarium consumes significantly less energy than other solariums to achieve the same results. The solarium parts made of

- ✓ Healthy for horse
- ✓ Good blood flow
- ✓ Fewer injuries
- ✓ Rapid lactic acid removal
- ✓ Relaxes the horse
- ✓ Fast drying
- ✓ Higher muscle elasticity


SOLARIUM

IRRIGATION

TREADMILL

SAFETY WALL

WALKER


Features

Discover the exceptional features of Q-line® solariums designed to ensure optimal safety, efficiency, and style for your equine companion.

1. Enhanced Safety Design:

Q-line® solariums are crafted with rounded edges and corners, eliminating the risk of injuries to your horse. Unlike many competitors' models made of sharp-edged steel, our solariums prioritize your horse's safety, reducing the potential for accidents and injuries.

2. Strategic Lamp Placement:

Our solariums feature lamps positioned higher than the surfaces, preventing them from falling out of their fittings. This innovative design minimizes the risk of contact with the warm IR lamps, ensuring your horse's safety during sessions.

3. Lightweight and Injury-Resistant:

Q-line® solariums are lightweight, significantly reducing the chances of injuries caused by accidental contact. Their user-friendly design ensures both safety and ease of use.

4. Energy Efficiency and Environmental Friendliness:

Our solariums consume up to 40% less energy than competitors, making them environmentally friendly choices. Crafted from heat-resistant plastic, they are corrosion-resistant, leading to minimal heat loss and high energy efficiency.

5. Durable Infrared Lamps:

Q-line® solariums are equipped with specially designed infrared lamps capable of enduring prolonged intense heat, burning for up to 5000 hours. This ensures longevity and consistent performance.

6. Stylish and Easy Installation:

With a sleek appearance and meticulous finishing, our solariums add a touch of elegance to your stable. All models come plug-and-play ready, allowing effortless installation for your convenience.

7. Intelligent Ventilation System:

Automatic fans activate when the internal temperature reaches 30°C, preventing cold air from blowing directly onto your horse. Located at the bottom, the fan prevents dust from entering the solarium. Cold air is drawn across the lamps before being gently distributed over your horse.

8. Low Maintenance and Water Resistance:

Thanks to advanced technology and durable materials, Q-line® solariums require minimal maintenance. Their waterproof design from the top makes them ideal for use in wash or grooming areas.

9. Certified Safety Standards:

Compliance with machine directive 2006/42EG and the CE mark is standard across all Q-line® solariums. Additionally, our solariums are factory-inspected according to NEN 3140 and ARBO guidelines, meeting stringent European safety standards.



SOLARIUM



IRRIGATION



TREADMILL



SAFETY WALL



WALKER

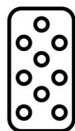
Elevate your horse care routine with Q-line® solariums – where safety, efficiency, and style converge seamlessly. Experience the difference today.

Installation of the Q-Line Solarium

Q-Line solariums are designed for **maximum quality with minimal effort**. All models are **plug-and-play and pre-assembled**, making them very easy to install by yourself.

Each set comes with a **clear user and installation manual**, guiding you step by step through the process. All cables, plugs, and mounting points are prepared – **just connect, hang up, and it's ready to use**.

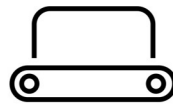
Prefer professional installation? No problem. Our experienced **Q-Line installation team** operates **worldwide**, ensuring perfect setup, safety, and top-quality finishing.



SOLARIUM



IRRIGATION



TREADMILL



SAFETY WALL



WALKER

Configuration & options



Control ET-IR AB UV 230



Coin device 230 € 1



Pay with app 230



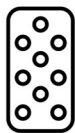
Angled support zinc



Electric Lift 100



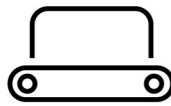
Solarium Installation



SOLARIUM



IRRIGATION



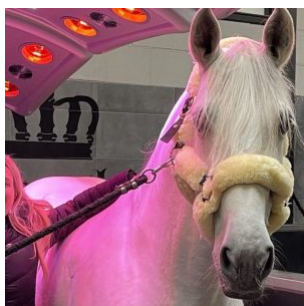
TREADMILL



SAFETY WALL



WALKER



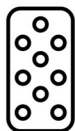
“I’ve been using the Q-line solarium for several years now, and I’m genuinely super happy with it! I have the MaXuSS model — the version that allows you to set the lights in a specific colour, so naturally mine is pink! In addition to the heat lamps, there are also UV lamps, which really benefit my horses, especially during the winter months. The service has always been perfect — it’s already been relocated twice. The technicians are incredibly friendly and the end result is great — it’s installed super neatly. In short: top-notch service and a top-quality solarium!”

— Britt Dekker



“Already after the first treatment with the Warm-up I could finally, after 3 years of trying everything, normally mount my horse standing complete still and without stress. I’m amazed at the difference the mounty pad has made to Jack in less than a week.”

— Vicky Jeffries



SOLARIUM



IRRIGATION



TREADMILL



SAFETY WALL

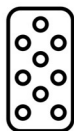
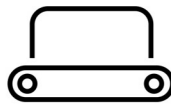


WALKER



“Every horse is different, so every horse has his own pad for the best performances. That’s only possible with Sedelogic. I train Wotan for example with the Orthopad so the saddle gets slightly lifted in the back. For him, it’s the perfect solution to give his best in every competition.”

— Remco Bouwens

**SOLARIUM****IRRIGATION****TREADMILL****SAFETY WALL****WALKER**

Specifications

Length	190 cm
Width	119 cm
Thickness	40 cm
Drive system	45Kg
Basic material	Reinforced heat resisting plastic
Colour	Black / Silver Grey
Number of IR lamps	18 x 150 Watt, 2 x 100 Watt
Power supply	L+N+PE 230 Volt
Power usage	3620 Watt
Fuse with	C16 A
IP rating	IP 54
Air blower	4x 90m3, automatic at 30grC
Suspension	4x chains (1 meter) and swing hooks
Supplied as standard	Power cable 10 mtr including plugs
Quality mark	CE / NEN 3140 / OSH
Transport weight	65 kg
Transport size	1 pallet 120x80x220 cm
Number of UV lamps	2 x 300W

Contact details

Q-Line Equestrian B.V.

Haarbrinksweg 47

7678 RS Geesteren

Tel. +31(0)546212361

info@Q-Line.com

www.q-line.com