



SOLARIUM



IRRIGATION



TREADMILL



SAFETY WALL



WALKER

MaXuSS Solarium

Standard

MaXuSS Solarium 230 / Article no. 20-5-10-00230





SOLARIUM



IRRIGATION



TREADMILL



SAFETY WALL



WALKER

Better blood flow

The infrared rays of the Q-Line solarium will improve blood circulation in the muscles, which improves the drainage of waste products in the muscles and your horse is less likely to suffer from injuries. The infrared heat generated by the Q-Line solarium ensures that blood sugars are absorbed more quickly by the muscles. The lactic acid in the muscles is also drained faster.

Warm up

A warm-up under a Q-line solarium before training or competition relaxes the muscles and reduces the risk of injury. The solarium is ideal for drying your horse after a wash. Muscle elasticity is promoted by the heat generated by the Q-Line solarium and has a soothing effect in case of injuries.

Therapeutic

The Q-line solariums are also available with the latest innovations in light therapy. By exposing the horse to certain light frequencies, a therapeutic effect is created and your horse will regain balance. In combination with the heat generated, your horse will recover faster after a heavy effort.

Finish

The solarium, with a beautifully finished body, follows the lines of the horse so that each muscle group is correctly illuminated by the IR lamps. Due to the heat-resistant plastic, the lamps in plastic holders and the reuse of residual heat, a very high efficiency can be achieved.

The front and rear parts can move separately from each other so that you can always make the right setting. The solarium is finished with rounded sides, which excludes the risk of injury to your horse. The lamps are placed higher than the bottom surfaces. This minimizes the chance of contact with the warm IR lamps.

Energy efficient

A Q-Line solarium uses considerably less energy than another solarium to achieve the same result. The solarium parts of specially formulated plastic ensure minimal heat loss and the air flow from the fan is heated by the residual heat inside the solarium. The infrared lamps in the Q-Line solariums are designed in such a way that they reach a higher temperature than other lamps.

- ✓ Healthy for horse
- ✓ Good blood flow
- ✓ Fewer injuries
- ✓ Rapid lactic acid removal
- ✓ Fast drying
- ✓ Higher muscle elasticity





SOLARIUM



IRRIGATION



TREADMILL



SAFETY WALL



WALKER

Features

Discover the exceptional features of Q-line® solariums designed to ensure optimal safety, efficiency, and style for your equine companion.

1. Enhanced Safety Design:

Q-line® solariums are crafted with rounded edges and corners, eliminating the risk of injuries to your horse. Unlike many competitors' models made of sharp-edged steel, our solariums prioritize your horse's safety, reducing the potential for accidents and injuries.

2. Strategic Lamp Placement:

Our solariums feature lamps positioned higher than the surfaces, preventing them from falling out of their fittings. This innovative design minimizes the risk of contact with the warm IR lamps, ensuring your horse's safety during sessions.

3. Lightweight and Injury-Resistant:

Q-line® solariums are lightweight, significantly reducing the chances of injuries caused by accidental contact. Their user-friendly design ensures both safety and ease of use.

4. Energy Efficiency and Environmental Friendliness:

Our solariums consume up to 40% less energy than competitors, making them environmentally friendly choices. Crafted from heat-resistant plastic, they are corrosion-resistant, leading to minimal heat loss and high energy efficiency.

5. Durable Infrared Lamps:

Q-line® solariums are equipped with specially designed infrared lamps capable of enduring prolonged intense heat, burning for up to 5000 hours. This ensures longevity and consistent performance.

6. Stylish and Easy Installation:

With a sleek appearance and meticulous finishing, our solariums add a touch of elegance to your stable. All models come plug-and-play ready, allowing effortless installation for your convenience.

7. Intelligent Ventilation System:

Automatic fans activate when the internal temperature reaches 30°C, preventing cold air from blowing directly onto your horse. Located at the bottom, the fan prevents dust from entering the solarium. Cold air is drawn across the lamps before being gently distributed over your horse.

8. Low Maintenance and Water Resistance:

Thanks to advanced technology and durable materials, Q-line® solariums require minimal maintenance. Their waterproof design from the top makes them ideal for use in wash or grooming areas.

9. Certified Safety Standards:

Compliance with machine directive 2006/42EG and the CE mark is standard across all Q-line® solariums. Additionally, our solariums are factory-inspected according to NEN 3140 and ARBO guidelines, meeting stringent European safety standards.

Elevate your horse care routine with Q-line® solariums – where safety, efficiency, and style converge seamlessly. Experience the difference today.



SOLARIUM



IRRIGATION



TREADMILL



SAFETY WALL



WALKER

Standard options



Control basic 230



Control CB IR AB 230



Control MT IR AB 230



Control ET-IR AB 230



Pay with app 230



Coin device 230 € 1



Angled support zinc



Electric Lift 170



SOLARIUM



IRRIGATION



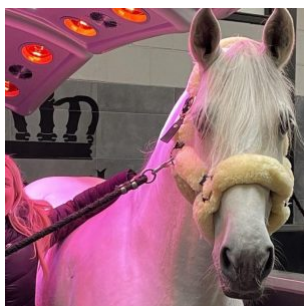
TREADMILL



SAFETY WALL

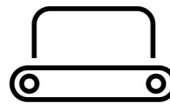


WALKER



“I’ve been using the Q-line solarium for several years now, and I’m genuinely super happy with it! I have the MaXuSS model — the version that allows you to set the lights in a specific colour, so naturally mine is pink! In addition to the heat lamps, there are also UV lamps, which really benefit my horses, especially during the winter months. The service has always been perfect — it’s already been relocated twice. The technicians are incredibly friendly and the end result is great — it’s installed super neatly. In short: top-notch service and a top-quality solarium!”

— Britt Dekker

**SOLARIUM****IRRIGATION****TREADMILL****SAFETY WALL****WALKER**

Specifications

Length	240 cm
Width	130 cm
Height	44 cm
Weight	71,5 kg
Basic material	Reinforced heat resisting plastic
Colour	Black / Silver Grey
Number of IR lamps	10 x 100 Watt ,12 x 150 Watt ,2 x 250 Watt
Power supply	L+N+PE 230 Volt
Power usage	3500 Watt
Fuse with	C 16 A
Air blower	6x 90m3, automatic at 30grC
Suspension	4x chains (1 meter) and swing hooks
Supplied as standard	Power cable 10 mtr including plugs
Quality mark	CE / NEN 3140 / OSH
IP rating	IP54
Transport size	150x85x170 cm
Transport weight	95 Kg

Contact details

Q-Line Equestrian B.V.

Haarbrinksweg 47

7678 RS Geesteren

Tel. +31(0)546212361

info@Q-Line.com

www.q-line.com