



SOLARIUM



IRRIGATION



TREADMILL



SAFETY WALL



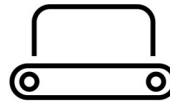
WALKER

MaXuSS Solarium with LED spots

MaXuSS Solarium LED 230 / Article no. 20-5-10-10230




SOLARIUM

IRRIGATION

TREADMILL

SAFETY WALL

WALKER

The solarium is shaped with only round edges so that your horse will not easily damage itself. The lamps are placed higher than the reflecting surface of the solarium so the chance of your horse touching the warm lamps is reduced to a minimum. By using a heat resistance plastic and placing the lamps in plastic lamp holders we can achieve a very high output.

The front and rear parts can move separately from each other so that you can always make the correct setting. The solarium is finished with rounded edges, which eliminates the risk of injury to your horse. The lamps are placed higher than the bottom surfaces. This minimizes the chance of contact with the warm IR lamps.

The 9 built-in LED spots provide sufficient light during grooming.

Image not found **Healthy for horse**

Image not found **Good blood flow**

Image not found **Fewer injuries**

Image not found **Rapid lactic acid removal**

Image not found **Fast drying**

Image not found **Higher muscle elasticity**



Features

Discover the exceptional features of Q-line® solariums designed to ensure optimal safety, efficiency, and style for your equine companion.

1. Enhanced Safety Design:

Q-line® solariums are crafted with rounded edges and corners, eliminating the risk of injuries to your horse. Unlike many competitors' models made of sharp-edged steel, our solariums prioritize your horse's safety, reducing the potential for accidents and injuries.

**SOLARIUM****IRRIGATION****TREADMILL****SAFETY WALL****WALKER****2. Strategic Lamp Placement:**

Our solariums feature lamps positioned higher than the surfaces, preventing them from falling out of their fittings. This innovative design minimizes the risk of contact with the warm IR lamps, ensuring your horse's safety during sessions.

3. Lightweight and Injury-Resistant:

Q-line® solariums are lightweight, significantly reducing the chances of injuries caused by accidental contact. Their user-friendly design ensures both safety and ease of use.

4. Energy Efficiency and Environmental Friendliness:

Our solariums consume up to 40% less energy than competitors, making them environmentally friendly choices. Crafted from heat-resistant plastic, they are corrosion-resistant, leading to minimal heat loss and high energy efficiency.

5. Durable Infrared Lamps:

Q-line® solariums are equipped with specially designed infrared lamps capable of enduring prolonged intense heat, burning for up to 5000 hours. This ensures longevity and consistent performance.

6. Stylish and Easy Installation:

With a sleek appearance and meticulous finishing, our solariums add a touch of elegance to your stable. All models come plug-and-play ready, allowing effortless installation for your convenience.

7. Intelligent Ventilation System:

Automatic fans activate when the internal temperature reaches 30°C, preventing cold air from blowing directly onto your horse. Located at the bottom, the fan prevents dust from entering the solarium. Cold air is drawn across the lamps before being gently distributed over your horse.

8. Low Maintenance and Water Resistance:

Thanks to advanced technology and durable materials, Q-line® solariums require minimal maintenance. Their waterproof design from the top makes them ideal for use in wash or grooming areas.

9. Certified Safety Standards:

Compliance with machine directive 2006/42EG and the CE mark is standard across all Q-line® solariums. Additionally, our solariums are factory-inspected according to NEN 3140 and ARBO guidelines, meeting stringent European safety standards.

Elevate your horse care routine with Q-line® solariums – where safety, efficiency, and style converge seamlessly. Experience the difference today.



SOLARIUM



IRRIGATION



TREADMILL



SAFETY WALL



WALKER

Configuration & options



9 RGB LED



Control CB IR AB L 230



Control MT IR AB L 230



Control ET-IR AB, L 230



Pay with app 230



Coin device 230 € 1



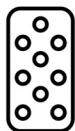
Angled support zinc



Electric Lift 170



Solarium Installation



SOLARIUM



IRRIGATION



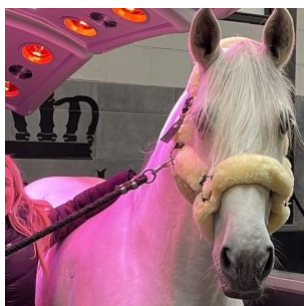
TREADMILL



SAFETY WALL

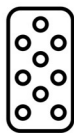
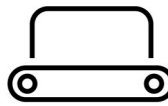


WALKER



“I’ve been using the Q-line solarium for several years now, and I’m genuinely super happy with it! I have the MaXuSS model — the version that allows you to set the lights in a specific colour, so naturally mine is pink! In addition to the heat lamps, there are also UV lamps, which really benefit my horses, especially during the winter months. The service has always been perfect — it’s already been relocated twice. The technicians are incredibly friendly and the end result is great — it’s installed super neatly. In short: top-notch service and a top-quality solarium!”

— Britt Dekker

**SOLARIUM****IRRIGATION****TREADMILL****SAFETY WALL****WALKER**

Specifications

Length	240 cm
Width	130 cm
Height	44 cm
Weight	71,5 kg
Basic material	Reinforced heat resisting plastic
Colour	Black / Silver Grey
Number of IR lamps	10 x 100 Watt ,12 x 150 Watt ,2 x 250 Watt
Power supply	L+N+PE 230 Volt
Power usage	3525 Watt
Fuse with	C 16 A
Air blower	6x 90m3, automatic at 30grC
Suspension	4x chians (1 meter) and swing hooks
Suplied as standard	Power cable 10 mtr including plugs
Quality mark	CE / NEN 3140 / OSH
IP rating	IP54
Transport size	150x85x170 cm
Transport weight	95 Kg
Number of LED lamps	9 x 5w 4000K

Contact details

Q-Line Equestrian B.V.

Haarbrinksweg 47

7678 RS Geesteren

Tel. +31(0)546212361

info@Q-Line.com

www.q-line.com