



SOLARIUM



IRRIGATION



TREADMILL



SAFETY WALL



WALKER

MaXuSS Extended

Solarium 230V

MaXuSS Extended 230 / Article no. 20-5-15-00230



**SOLARIUM****IRRIGATION****TREADMILL****SAFETY WALL****WALKER**

Thoughtful design, maximum performance

The MaXuSS horse solarium is designed to warm the horse evenly and effectively. The sleek, well-finished body follows the natural contours of the horse and consists of three main sections with six side units. This ensures that all major muscle groups are optimally covered by the infrared lamps.

The front and rear sections can be adjusted independently, allowing the heat to be precisely adapted to the horse and the moment of use.

- ✓ Stylish Shaped
- ✓ Lightweight Design
- ✓ Flexible Shape Adjustment
- ✓ High Heat Output
- ✓ Heat Resistant plastic
- ✓ Spray water proof

Effective infrared heat

The infrared lamps provide deep, even warmth that supports blood circulation. This helps relax the muscles and contributes to the removal of waste products after exercise. The result is a horse that moves more freely and recovers faster.

The MaXuSS solarium is suitable for:

- warming up before training
- recovery after exercise
- comfortable drying after washing

Without cold drafts or damp areas.

Safe and horse-friendly

Safety is central to the design. The solarium features rounded edges to minimize the risk of injury. The infrared lamps are positioned higher than the lower surfaces, reducing the chance of direct contact with warm components.

Thanks to heat-resistant plastics and plastic lamp holders, the system is durable and reliable for daily use.

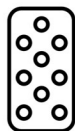
Energy-efficient and effective

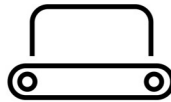
The MaXuSS horse solarium is developed to deliver high performance with low energy consumption. The specially composed plastic housing reduces heat loss, while residual heat is intelligently reused through internal air circulation. The infrared lamps quickly reach operating temperature, ensuring efficient and effective performance.

Summary

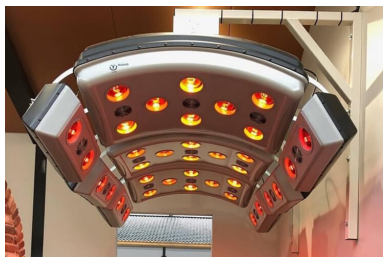
The MaXuSS Extended Solarium for horses combines:

- even heat distribution


SOLARIUM

IRRIGATION

TREADMILL

SAFETY WALL

WALKER


Features

Safety:

The Q-line® solarium have been finished with round sides and corners which excludes the chance your horse will get injured. The lamps are placed higher than the holders so that the horse can never come in to direct contact with the lamps.

Durability:

The Q-line® solarium use up to 40% less energy than competitive products and are remarkably environmentally friendly. The heat resistant plastic is insensitive to corrosion and ensure minimal heat loss and a high efficiency. The infrared lights in the Q-line® solarium are designed to be especially heat resistant and can endure great temperatures for extensive periods of time. These lamps can burn up to 5000 hours.

External characteristics:

The Q-line® solarium have a stylish appearance and smooth finishing. All solarium can be used directly and require no further assembly. The fans automatically switch on at an internal temperature of 30 degrees C so that no cold air is blown over your horse. 12 built-in spots distributed over the entire bottom surface provide sufficient light during washing and cleaning. The biological effect of the sun beams can be compared to a sports activity, improve the recovery capacity after heavy physical activity or illness and ensure reactivation of active substances, increase or regulation of blood calcium levels.

Maintenance:

The Q-line® solarium require little to no maintenance. With our technologically advanced design and the choice of materials we have ensured that corrosion is kept to a minimum.

Quality mark:

All Q-line® solarium conform to the machine code 2006/42/EG and are fit with the CE norm. The Q-line® solarium are certified according to the NEN 3140 and Labor and health directive en hereby conform to all European safety demands



SOLARIUM



IRRIGATION



TREADMILL



SAFETY WALL



WALKER

Configuration & options



Control CB IR AB 230



Control MT IR AB 230



Control ET-IR AB 230



Electric Lift 170 Heavy Duty



Solarium Installation



SOLARIUM



IRRIGATION



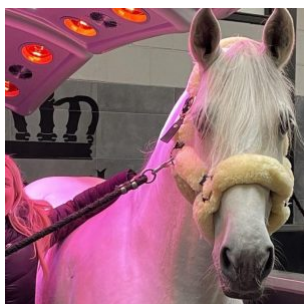
TREADMILL



SAFETY WALL



WALKER



“I’ve been using the Q-line solarium for several years now, and I’m genuinely super happy with it! I have the MaXuSS model — the version that allows you to set the lights in a specific colour, so naturally mine is pink! In addition to the heat lamps, there are also UV lamps, which really benefit my horses, especially during the winter months. The service has always been perfect — it’s already been relocated twice. The technicians are incredibly friendly and the end result is great — it’s installed super neatly. In short: top-notch service and a top-quality solarium!”

— Britt Dekker

**SOLARIUM****IRRIGATION****TREADMILL****SAFETY WALL****WALKER**

Specifications

Length	254 cm
Width	201 cm
Height	100 cm
Weight	125 Kg
Colour	Black / Silver Grey
Number of IR lamps	36x 100Watt
Power supply	L+N+PE 230 Volt
Power usage	3960 watt
Fuse with	C 20 A
Air blower	12 x 90m3, automatic at 30grC
Suspension	4x chians (1 meter) and swing hooks
Suplied as standard	Power cable 10 mtr including plugs
Quality mark	CE / NEN 3140 / OSH
IP rating	54
Transport size	150x85x210 cm
Transport weight	145 Kg

Contact details

Q-Line Equestrian B.V.

Haarbrinksweg 47

7678 RS Geesteren

Tel. +31(0)546212361

info@Q-Line.com

www.q-line.com