



SOLARIUM



IRRIGATION



TREADMILL



SAFETY WALL



WALKER

## **MaXuSS Thera Solarium** with UV and RGB LED spots

MaXuSS Thera Advanced 230 / Article no. 20-5-20-00230



**SOLARIUM****IRRIGATION****TREADMILL****SAFETY WALL****WALKER**

### Light Therapy for Horses: Colors and Their Impact on Equine Health

Colors play an essential role in the physical and emotional health of your horse. Light therapy, using specific colors, offers a range of benefits that contribute to the well-being of your horse.

#### Blue: The Calming Influence

Blue light is known for its calming effects. It promotes deep relaxation and has a proven positive impact on various types of pain. Furthermore, it harmonizes metabolism and intestinal activity, essential for the overall health of your horse.

#### Green: Tranquility and Detoxification

Green light has a calming effect and contributes to your horse's inner peace. It relaxes the organs and is crucial for stimulating the body's detoxification process. This supports an effective waste removal system.

#### Yellow: Energy and Purification

The color of the sun, yellow, brings cheerfulness and injects new energy. It aids in removing toxins and negative particles, which is crucial for maintaining a healthy internal environment.

#### Red: Activation and Strengthening

Red, the color of the heart, lungs, and muscles, is stimulating and revitalizing. It has a diuretic effect and strengthens the immune system, making your horse more resistant to diseases and infections.

### Maxuss Thera: Innovative Light Therapy

The Maxuss Thera is a leading product in the world of equine light therapy. The design consists of heat-resistant plastic and is designed to follow the contours of the horse for optimal illumination.

**Advanced Technology:** The IR, UV, and RGB lamps ensure uniform illumination of all muscle groups.

**Adaptability:** The front and back of the solarium can move independently, allowing the device to be perfectly adjusted to your horse.

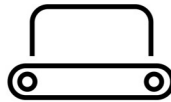
**Ease of Use:** The height can be easily adjusted with the included lift, operable from the control console.

#### Conclusion:

Light therapy is a revolutionary method for promoting the health and well-being of your horse. With the proper application of colors and the advanced capabilities of the Maxuss Thera, you can expect a significant improvement in your horse's quality of life.

- ✓ Stylish look
- ✓ Lightweight design
- ✓ Flexible shape setting
- ✓ Higher heat output
- ✓ Impact resistant plastic
- ✓ Spray water proof
- ✓ CE marking


**SOLARIUM**

**IRRIGATION**

**TREADMILL**

**SAFETY WALL**

**WALKER**


## Features

### Safety:

The Q-line® solarium have been finished with round sides and corners which excludes the chance your horse will get injured. The lamps are placed higher than the holders so that the horse can never come in to direct contact with the lamps.

### Durability:

The Q-line® solarium use up to 40% less energy than competitive products and are remarkably environmentally friendly. The heat resistant plastic is insensitive to corrosion and ensure minimal heat loss and a high efficiency. The infrared lights in the Q-line® solarium are designed to be especially heat resistant and can endure great temperatures for extensive periods of time. These lamps can burn up to 5000 hours.

### External characteristics:

The Q-line® solarium have a stylish appearance and smooth finishing. All solarium can be used directly and require no further assembly.

The fans automatically switch on at an internal temperature of 30 degrees C so that no cold air is blown over your horse. 9 built-in RGB spots are programmable and distributed over the entire bottom surface provide sufficient therapeutic light during washing and cleaning. The RGB lights have a positive, beneficial effect on the energy system and ensure that your horse is more in harmony.

The biological effect of the sun beams can be compared to a sports activity, improve the recovery capacity after heavy physical activity or illness and ensure reactivation of active substances, increase or regulation of blood calcium levels.

### Maintenance:

The Q-line® solarium require little to no maintenance. With our technologically advanced design and the choice of materials we have ensured that corrosion is kept to a minimum.

### Quality mark:

All Q-line® solarium conform to the machine code 2006/42/EG and are fit with the CE norm. The Q-line® solarium are certified according to the NEN 3140 and Labor and health directive en hereby conform to all European safety demands



SOLARIUM



IRRIGATION



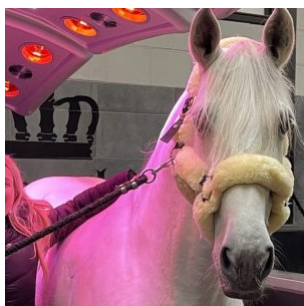
TREADMILL



SAFETY WALL

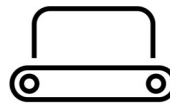


WALKER



**“I’ve been using the Q-line solarium for several years now, and I’m genuinely super happy with it! I have the MaXuSS model — the version that allows you to set the lights in a specific colour, so naturally mine is pink! In addition to the heat lamps, there are also UV lamps, which really benefit my horses, especially during the winter months. The service has always been perfect — it’s already been relocated twice. The technicians are incredibly friendly and the end result is great — it’s installed super neatly. In short: top-notch service and a top-quality solarium!”**

— Britt Dekker

**SOLARIUM****IRRIGATION****TREADMILL****SAFETY WALL****WALKER**

## Specifications

<b>Length</b>	243 cm
<b>Width</b>	130 cm
<b>Height</b>	80 cm
<b>Weight</b>	95 Kg
<b>Basic material</b>	Heat resistant plastic
<b>Colour</b>	Black /Silver Grey
<b>Number of IR lamps</b>	12x IR 100W, 10x IR 150W
<b>Number of UV lamps</b>	2x 300W
<b>Number of LED lamps</b>	9 programmable RGB LED lights
<b>Air blower</b>	6x 90m3, automatic at 30grC
<b>Power supply</b>	230V L+N+PE 16A
<b>Power usage</b>	3530 Watt
<b>Fuse with</b>	C 16 A
<b>Suspension</b>	Lift unit, max lift height 1,5 mtr
<b>Suplied as standard</b>	Control box
<b>Other</b>	Shape is fully electric adjustable
<b>Quality mark</b>	CE / NEN 3140 / OHS
<b>IP rating</b>	54
<b>Transport weight</b>	137 Kg
<b>Transport size</b>	155x85x200 cm

## Contact details

**Q-Line Equestrian B.V.**

Haarbrinksweg 47

7678 RS Geesteren

Tel. +31(0)546212361

[info@Q-Line.com](mailto:info@Q-Line.com)

[www.q-line.com](http://www.q-line.com)