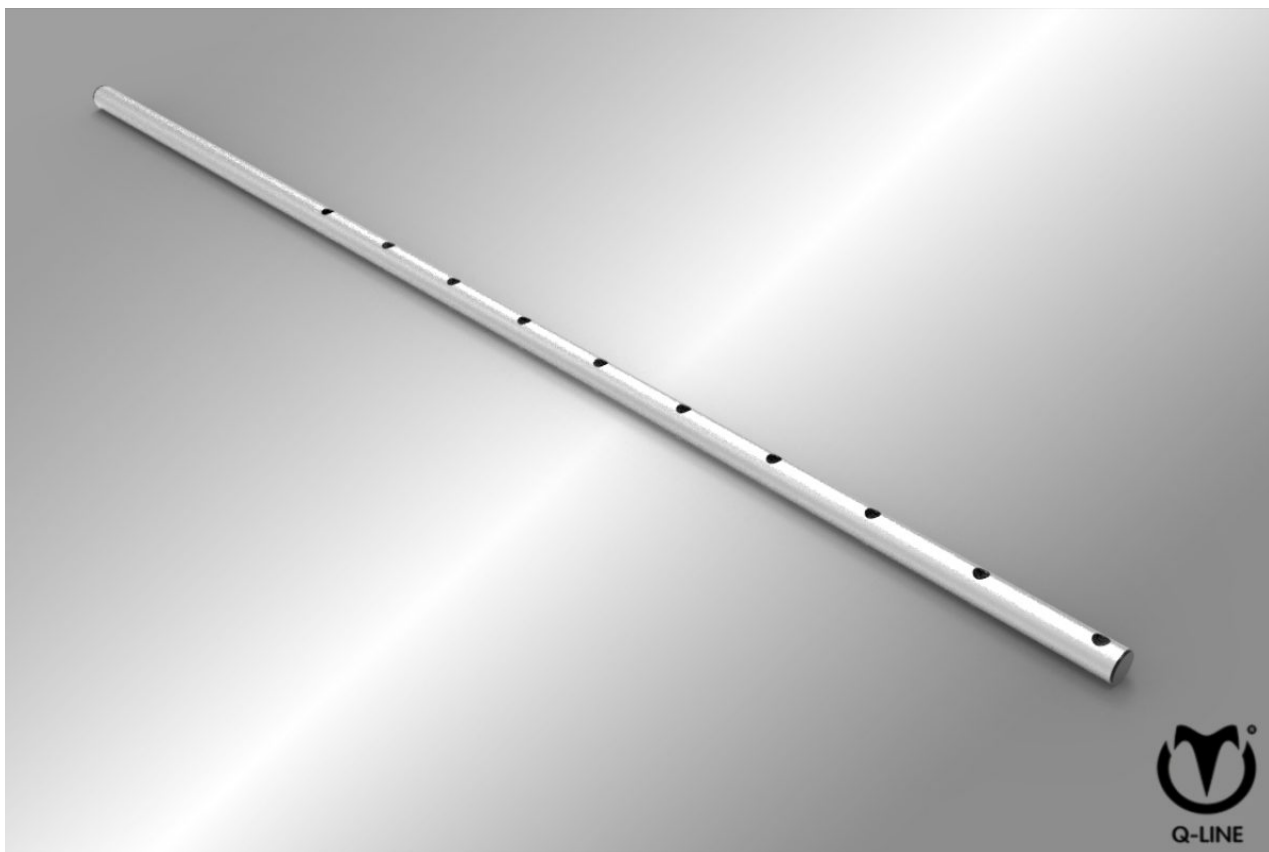
**SOLARIUM****IRRIGATION****TREADMILL****SAFETY WALL****WALKER**

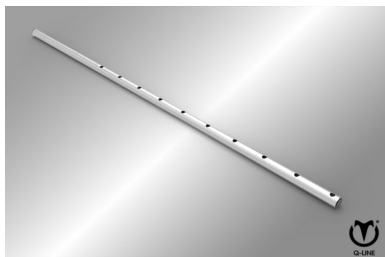
## Aluminium push panel tube suitable for safety flex drop rod

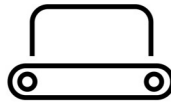
Push panel tube aluminium 10 holes 3 mtr / Article no. 23-4-80-00160



Replacement aluminum push panel tube, for light weight push panel with rods or mesh panels.

- ✓ Light weight
- ✓ Safe
- ✓ Shock conducting



**SOLARIUM****IRRIGATION****TREADMILL****SAFETY WALL****WALKER**

## Features

### **Safety:**

The lightweight tubes push panels are designed as safely as possible and come include shock conductive parts.

### **Sustainability:**

By using high-quality industrial parts, we can guarantee a very long lifespan. Due to a technologically advanced design, the walker rotates almost silently and very lightly, making the Q-line® exercise mills particularly energy-efficient.

### **Appearance:**

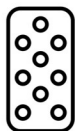
The push panels are suspended at a height of 2 meters and consist of an aluminum cross tube containing 1,6 meter long impact-resistant plastic tubes wrapped with a stainless steel spring for shock conduction.

### **Maintenance:**

Due to the technologically advanced design and the materials used, there is virtually no wear or corrosion, which minimizes maintenance.

### **Quality marks:**

All parts comply with the machine directive 2006/42EG and are standard provided with the correct quality marks, the Q-line® products are also certified ex-factory in accordance with the NEN 3140 and ARBO directive and therefore meet all European safety requirements.



**SOLARIUM**



**IRRIGATION**



**TREADMILL**



**SAFETY WALL**



**WALKER**

## Standard options



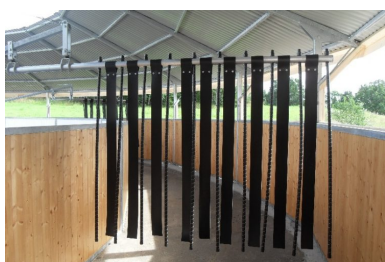
Safety Flex drop rod 200



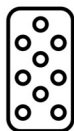
Safety Flex drop rod 166



Sight modification strap 160



Sight modification strap 200

**SOLARIUM****IRRIGATION****TREADMILL****SAFETY WALL****WALKER**

## Specifications

<b>Basic material</b>	Aluminium
<b>Suited for</b>	10 plastic drop rods with a diameter of 29 mm
<b>Suspension</b>	Not included
<b>Other</b>	Comes with end caps
<b>Drift Fence</b>	Suitable for safety flex drop rod
<b>Length</b>	3 meter
<b>Diameter</b>	60 mm
<b>Weight</b>	4,5 kg
<b>Transport weight</b>	10Kg
<b>Transport size</b>	0,2 x 3 meter

## Contact details

**Q-Line Equestrian B.V.**

Haarbrinksweg 47

7678 RS Geesteren

Tel. +31(0)546212361

[info@Q-Line.com](mailto:info@Q-Line.com)

[www.q-line.com](http://www.q-line.com)