

**SOLARIUM****IRRIGATION****TREADMILL****SAFETY WALL****WALKER**

## Cross Tie Posts

2.5 meters x 90 cm, galvanized

Wash bay partition frame / Article no. 18-4-00-00060

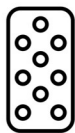


Wash bay partition frame including plastic planks in elegant black.

This frame provides a sturdy structure for an efficient washing area. The plastic planks are easy to clean and resistant to water. Create a functional and attractive washing space with this black partition frame.

The frame is standard thermally galvanized but can optionally also be powder-coated.

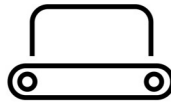
- ✓ Sturdy
- ✓ Low maintenance
- ✓ Safe



SOLARIUM



IRRIGATION



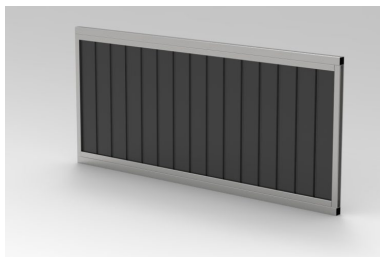
TREADMILL



SAFETY WALL



WALKER



## Features

A galvanized frame with dimensions of 2.5 meters in length and 90 cm in width. The frame is made of C profiles and seamlessly fits onto the tie posts.

**Durable:**

Made of high-quality materials for long-lasting use.



SOLARIUM



IRRIGATION



TREADMILL



SAFETY WALL



WALKER

## Specifications

**Fixings**

**Width**

**Colour**

**Length**

**Optional**

**Transport size**

Included

90 cm

black

2,5 meter

Powder coating

Europallet 120x80

## Contact details

**Q-Line Equestrian B.V.**

Haarbrinksweg 47

7678 RS Geesteren

Tel. +31(0)546212361

[info@Q-Line.com](mailto:info@Q-Line.com)

[www.q-line.com](http://www.q-line.com)