



SOLARIUM



IRRIGATION



TREADMILL



SAFETY WALL



WALKER

Q-MountBlock

The Innovative Mounting Aid for Riders

Q-MountBlock / Article no. 30-5-70-00010





SOLARIUM



IRRIGATION



TREADMILL



SAFETY WALL



WALKER

Q-MountBlock: The Innovative Mounting Aid for Riders Safe, Stable, and User-Friendly - Perfect for Any Riding Environment

Designed for Your Convenience and Safety

The Q-MountBlock is not just a mounting aid; it's a thoughtfully designed tool that helps riders mount their horses safely and easily. With its unique features, it provides a comfortable and secure experience for both amateurs and professionals.

Durable and Weatherproof

Each Mounting Aid is crafted with high-quality, UV-resistant materials, making it ideal for outdoor use. It is impact-resistant and can withstand the elements, ensuring it retains its quality and functionality even with prolonged exposure to sunlight.

Lightweight and Stable

Weighing only 8 kg, the Mounting Aid is surprisingly lightweight yet incredibly stable. Its solid base prevents the block from sinking into soft surfaces like sand, ensuring a stable and safe mounting experience.

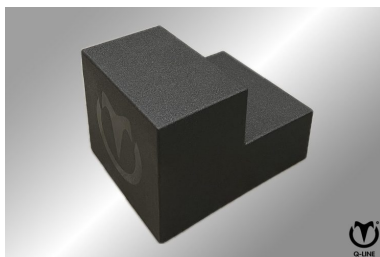
Innovative and User-Friendly Design

A unique addition is the handle in the middle of the block, ensuring perfect balance when lifting it, making moving it effortless and convenient.

Discover the Convenience of Q-MountBlock

Opt for a safe, stable, and effortless mounting experience with the Q-MountBlock. Contact us today for more information or to order your own Q-MountBlock.

- ✓ 5 year warranty
- ✓ Weatherproof
- ✓ Lightweight
- ✓ Stable
- ✓ Unique Handle
- ✓ User-friendly
- ✓ Versatility
- ✓ Safe



Features

1. Weatherproof and Durable Design:

The Mounting Aid is constructed with UV-resistant materials, making it ideal for long-term outdoor use and capable of withstanding various weather conditions. This makes the product highly durable and reliable for extended use.

2. Lightweight and Portable:

Weighing only 8 kg, the Mounting Aid is surprisingly lightweight, making it easy to move and position without sacrificing stability or durability.

**SOLARIUM****IRRIGATION****TREADMILL****SAFETY WALL****WALKER**

3. **Stability on Any Surface:**

Thanks to its solid base, the Mounting Aid does not sink into soft surfaces such as sand or grass, ensuring a stable and secure mounting experience in various environments.

4. **Unique Balanced Handle:**

The innovative handle in the middle of the block ensures perfect balance when lifted, simplifying transportation and positioning.

5. **Safe and User-Friendly:**

The design of the Mounting Aid provides a safe and comfortable mounting platform for riders, reducing the risk of injuries and increasing confidence for both novice and experienced riders.

6. **Versatility:**

Suitable for a wide range of users, from amateur riders to professional athletes, and for various equestrian activities, from training to competitions.

7. **Aesthetically Pleasing Design:**

In addition to functionality, the Q-MountBlock also offers an attractive appearance that aligns with the aesthetic values of equestrian facilities and private use.



SOLARIUM



IRRIGATION



TREADMILL



SAFETY WALL



WALKER

Specifications

Length	65 cm
Width	50 cm
Height	45 cm
Amount of layers	2 treden
Weight	8 kg
Basic material	Polyurethane
Quality mark	CE
Transport size	67x55x45 cm
Transport weight	9 kg

Contact details

Q-Line Equestrian B.V.

Haarbrinksweg 47

7678 RS Geesteren

Tel. +31(0)546212361

info@Q-Line.com

www.q-line.com