

SOLARIUM



IRRIGATION



TREADMILL



SAFETY WALL



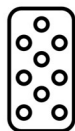
WALKER

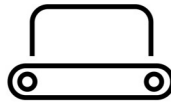
## **Irrigation pumps**

### Self-priming pump set

Pump set basic / Article no. 26-5-60-00002




**SOLARIUM**

**IRRIGATION**

**TREADMILL**

**SAFETY WALL**

**WALKER**

Discover our powerful self-priming pump, perfectly suited for basic 20x40 and 20x60 pop-up irrigation systems. This pump comes with a power cord, a working switch, a 7-meter suction hose with a spring-loaded check valve, and a 5-meter delivery pipe to the irrigation system.

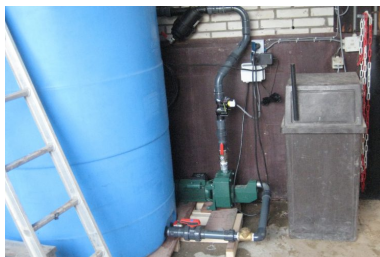
Our self-priming pump effortlessly draws water from any source. With a maximum suction depth of 8 meters, this pump can lift various types of water, making it ideal for diverse applications.

This pump is positioned above the water, ensuring the motor does not come into direct contact with it. The motor support is made of durable aluminum, and the impeller and diffuser are crafted from high-quality technopolymer. Stainless steel snap rings provide extra strength, and the mechanical seal consists of graphite/ceramic for optimal performance. The motor shaft is made of stainless steel AISI 304. Additionally, the pump is equipped with a built-in thermoamperometric protection and a permanently connected capacitor in the single-phase motor version.

Please note: this pump cannot be connected to an outdoor tap due to insufficient water supply for optimal operation.

If you want to learn more about our self-priming pump or are looking for a reliable solution for your irrigation needs, contact us. Our pump is specifically designed for basic pop-up irrigation systems, offering powerful performance for every situation. Discover the benefits of our pump today!

- ✓ Low noise
- ✓ High operational reliability
- ✓ Resistant to rust and limescale
- ✓ Ready to use



## Features

Motor support made of die-cast aluminum, end plate seal made of steel AISI 304.

Mechanical seal made of graphite/ceramic.

Rotor shaft made of steel AISI 304. Impellers, housing, and diffuser made of technopolymer.

Wearing rings made of stainless steel.

Motor protection class: IP 44.



SOLARIUM



IRRIGATION



TREADMILL



SAFETY WALL



WALKER

Terminal box protection class: IP 55.

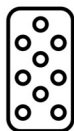
Insulation class: F.

Pumped liquid: clean, free from solid or abrasive components, non-viscous, chemically neutral, closely resembling water in its characteristics.

Temperature range of the pumped liquid: from 0°C to +35°C.

Euroinox self-priming design.

Maximum operating pressure: 8 bar.

**SOLARIUM****IRRIGATION****TREADMILL****SAFETY WALL****WALKER**

## Specifications

<b>Suited for</b>	26-5-12-02040 / 26-5-12-02060
<b>Connection</b>	1"
<b>Required liters</b>	0,6-7,2 m3/h
<b>Required working pressure</b>	5,7-1,65 bar
<b>Housing</b>	pump housing stainless
<b>Length</b>	pump 46 cm
<b>Width</b>	pump 17,5 cm
<b>Height</b>	pump 21 cm
<b>Weight</b>	pump 15,1 kg
<b>Included</b>	Suction hose 7 m incl. spring-loaded check valve
<b>Other</b>	5 mtr press pipe 32mm PVC
<b>Cable length</b>	5 mtr
<b>Quality mark</b>	CE
<b>Colour</b>	Green
<b>Suplied as standard</b>	Isolator switch
<b>Power supply</b>	230 V
<b>Power cord</b>	230 V L+N+PE
<b>Power usage</b>	1,4 kW
<b>Ampere</b>	6,3
<b>IP rating</b>	IP44 (IP55 on the connection box)
<b>Transport size</b>	500x25x25 cm
<b>Transport weight</b>	20 kg

## Contact details

**Q-Line Equestrian B.V.**

Haarbrinksweg 47

7678 RS Geesteren

Tel. +31(0)546212361

[info@Q-Line.com](mailto:info@Q-Line.com)

[www.q-line.com](http://www.q-line.com)